

**Costco**  
WHOLESALE  
SPRINGBANK, ALBERTA  
NEW WAREHOUSE AND GAS BAR

**COSTCO**  
WHOLESALE  
CORPORATION

909 LAKE DRIVE  
ISSAQUAH, WA 98027  
T: 425.313.8100  
Costco.com

**KEY PLAN**



**PROJECT DATA**

LEGAL DESCRIPTION: NW 1/4 SECTION 34 TOWNSHIP 24, RANGE 3 WEST OF 5 MERIDIAN  
PROJECT ADDRESS: 901 BINGHAM LINK ROCKY VIEW, ALBERTA  
WAREHOUSE: 921 BINGHAM LINK ROCKY VIEW, ALBERTA  
LIQUOR STORE: 941 BINGHAM LINK ROCKY VIEW, ALBERTA  
SITE AREA: 78,868.1m<sup>2</sup> (7.89 ha) / 19.49 ac  
ZONING: HIGHWAY EDGE ZONE  
JURISDICTION: ROCKY VIEW COUNTY

BOUNDARY INFORMATION: THIS DRAWING IS BASED ON A TENTATIVE PLAN OF SURVEY FROM MAIDMENT LAND SURVEYORS LTD. RECEIVED APRIL 1, 2022.

BUILDING DATA (MG2 REFERENCE FILE - NOV. 22, 2022)	AREA
TOTAL BUILDING GROSS FLOOR AREA	15,556.0m <sup>2</sup> 167,443ft <sup>2</sup>
LIQUOR POD GROSS FLOOR AREA	834.3m <sup>2</sup> 8,980ft <sup>2</sup>
GAS BAR MECHANICAL ENCLOSURE / STORAGE	11.6m <sup>2</sup> 125ft <sup>2</sup>
GAS BAR WAREHOUSE HUT	1.4m <sup>2</sup> 15ft <sup>2</sup>
SITE DATA	AREA
LOT COVERAGE	20.8% 16,390.3m <sup>2</sup>
LANDSCAPE OPEN SPACE	23.2% 18,337.3m <sup>2</sup>
PAVED PARKING AREA	56.0% 44,140.5m <sup>2</sup>
COSTCO PARKING DATA	PARKING SPACES
TOTAL PARKING REQUIRED (3 STALLS / 100m <sup>2</sup> )	473
NUMBER OF 3.0m WIDE PARKING SPACES PROVIDED	847
NUMBER OF 3.81m WIDE ACCESSIBLE PARKING SPACES PROVIDED	16
TOTAL COSTCO PARKING SPACES PROVIDED	863
NO. STALLS PROVIDED PER 100m <sup>2</sup> OF COSTCO BUILDING AREA	5.27
TIRE INFLATION SYSTEM PARKING	2

NO.	DESCRIPTION	BY	DATE	APPR.
1.	ISSUED FOR DEVELOPMENT PERMIT	CJM	2022-02-03	SODG
	REVISIONS			

ISSUED FOR APPROVAL, NOT FOR CONSTRUCTION  
ALL PREVIOUS ISSUES OF THIS DRAWING ARE SUPERSEDED

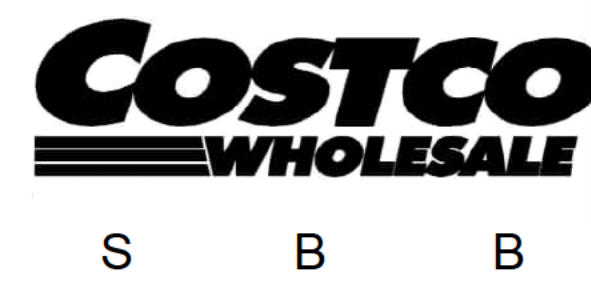
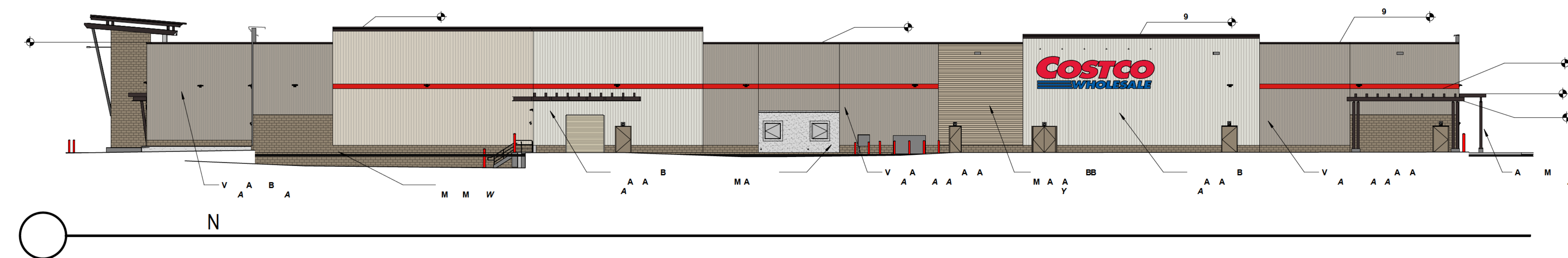
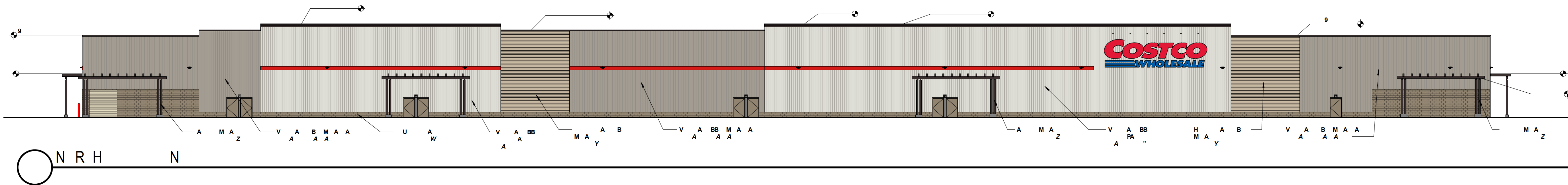
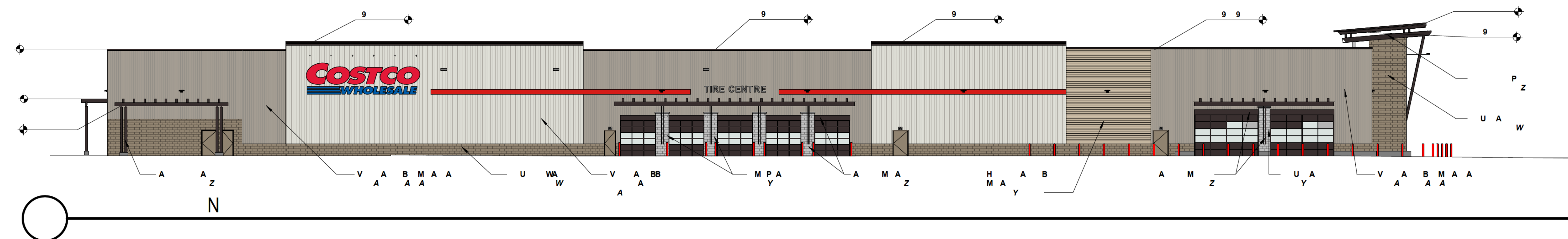
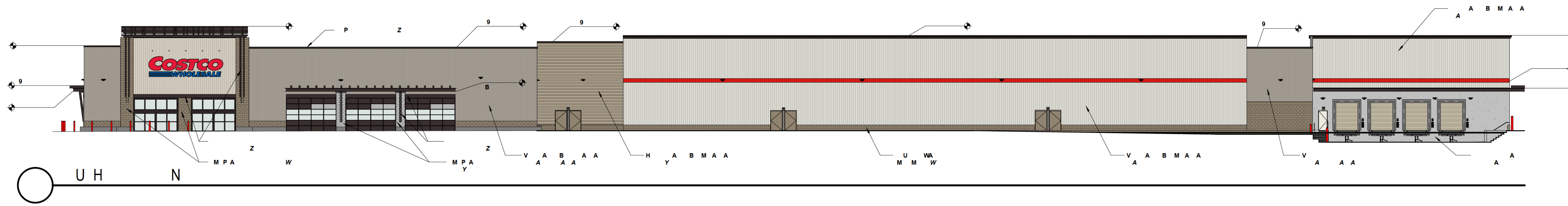
**SHEET TITLE**  
**SITE PLAN**



DESIGNED CJM/SODG	DRAWN CJM	CHECKED SODG
SCALE 1:600	DATE NOVEMBER 29, 2022	DWG. NUMBER SP-47
PROJECT NUMBER 211-01257-00-PL1		

For any additional information, or to obtain a copy of the Notice of Decision, please contact **Jacqueline Targett** ([jtargett@rockyview.ca](mailto:jtargett@rockyview.ca) or call 403-520-8161)

FILENAME: C:\Users\WSP\Desktop\Springbank\Springbank SP-47.dwg  
PLOTDATE: Nov 29, 2022 11:08am



1101 Second Ave  
Suite 100  
Seattle, WA 98101  
206 962 6500  
MG2.com

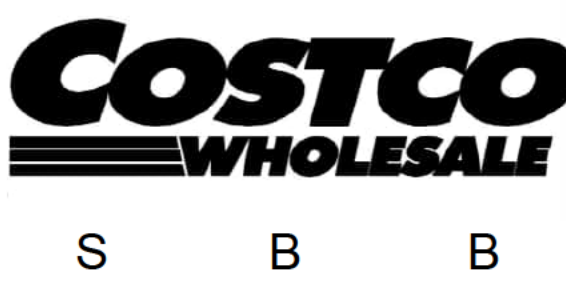
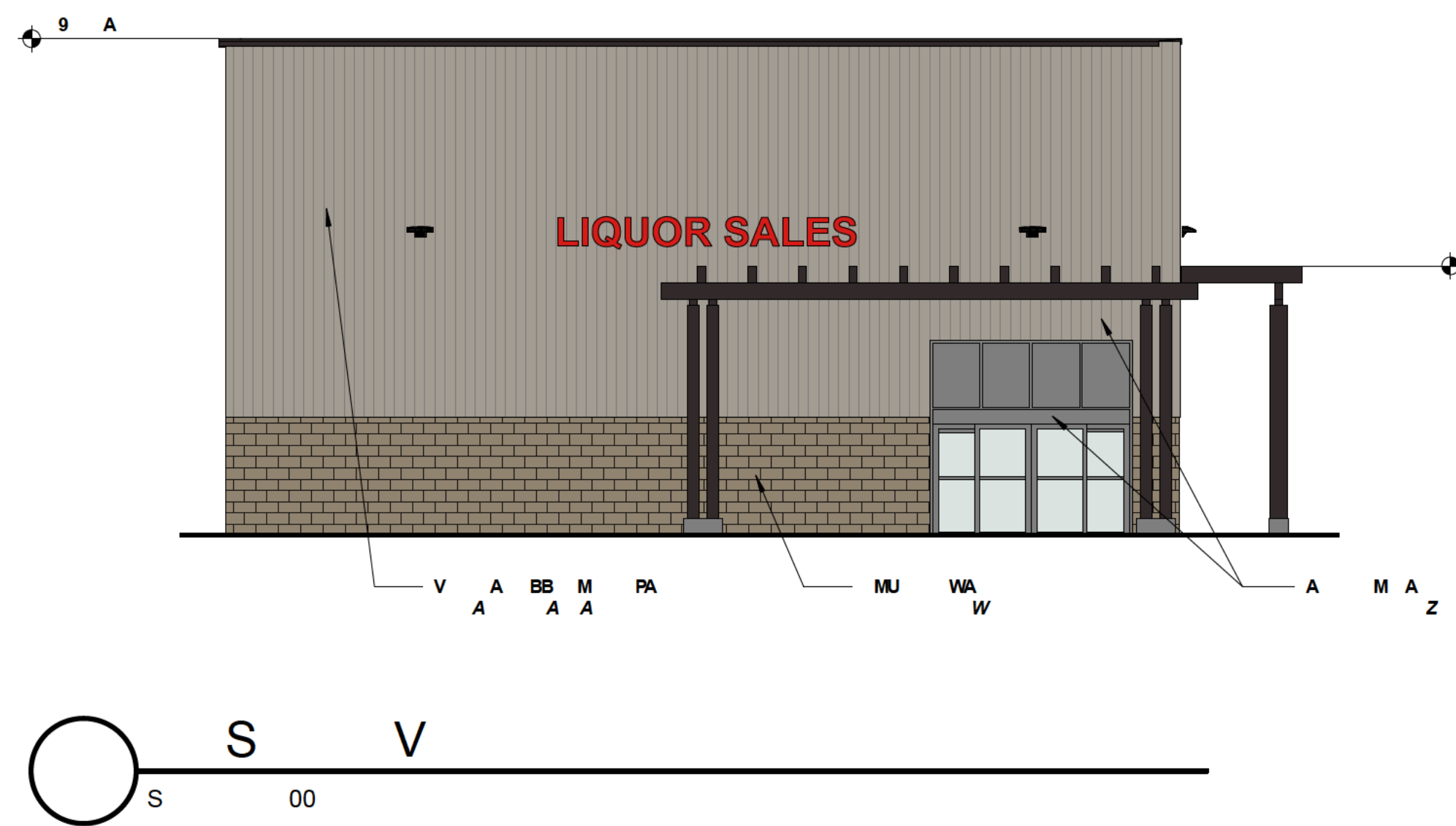
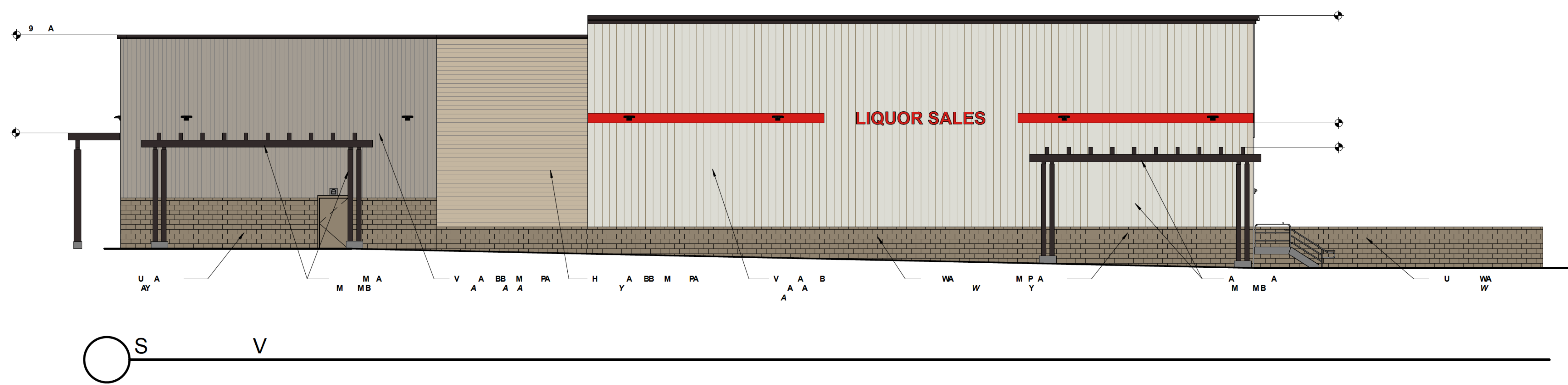
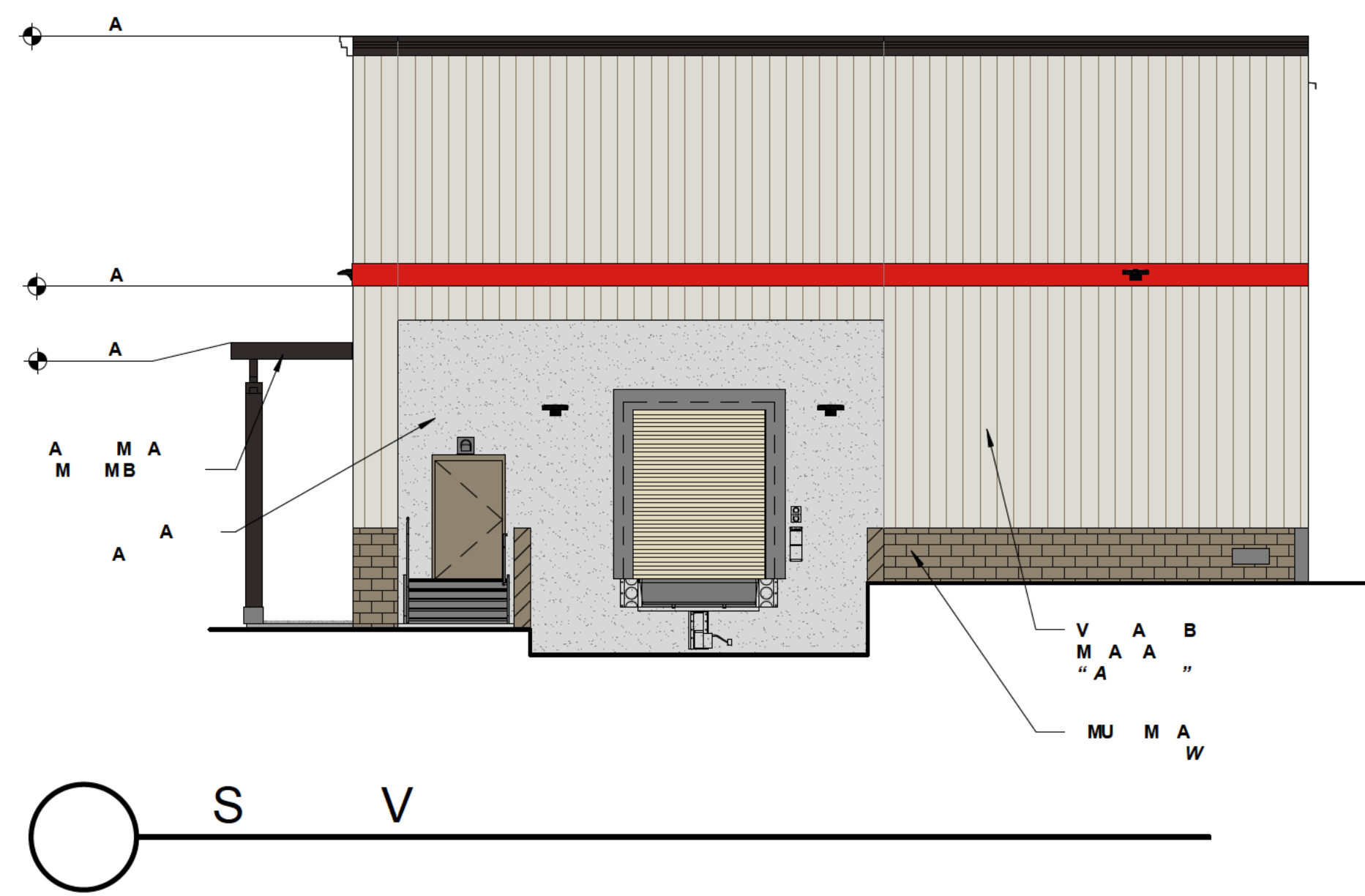
00

COSTCO WHOLESALE

CONCEPT WAREHOUSE ELEVATIONS

S B B

V  
A303  
S



1101 Second Ave  
Suite 100  
Seattle, WA 98101  
206 962 6500  
MG2.com

0 0

V S  
A 303

COSTCO WHOLESALE

CONCEPT LIQUOR POD ELEVATIONS

S B B



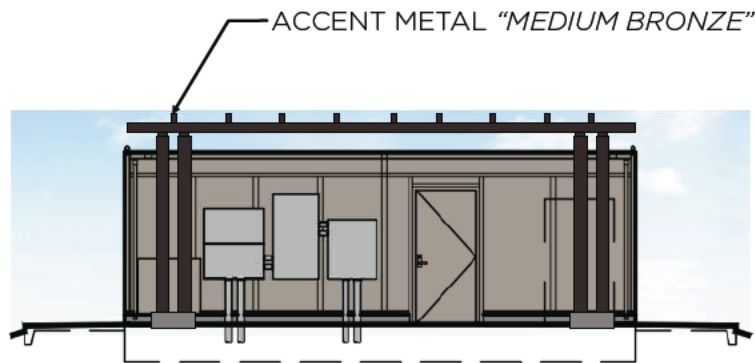
① NORTH/ SOUTH ELEVATION  
SCALE: 1" = 40'



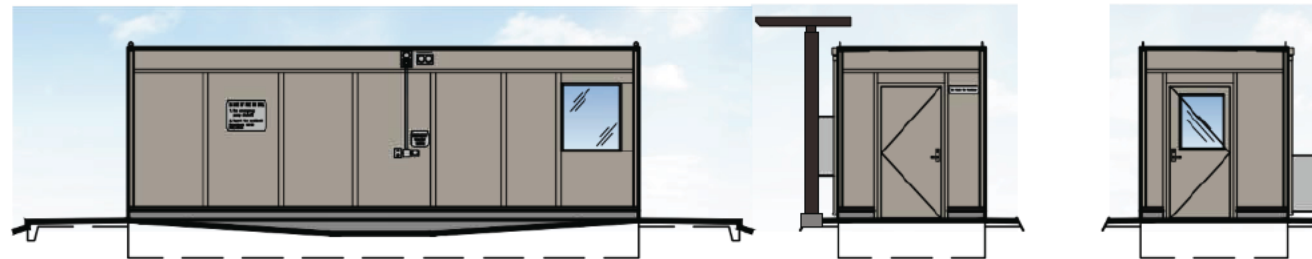
② EAST/ WEST ELEVATION  
SCALE: 1" = 40'



③ WARMING HUT  
SCALE: 1" = 40'



④ DATA HUT  
SCALE: 1" = 40'





## ENTRY CANOPY PERSPECTIVE



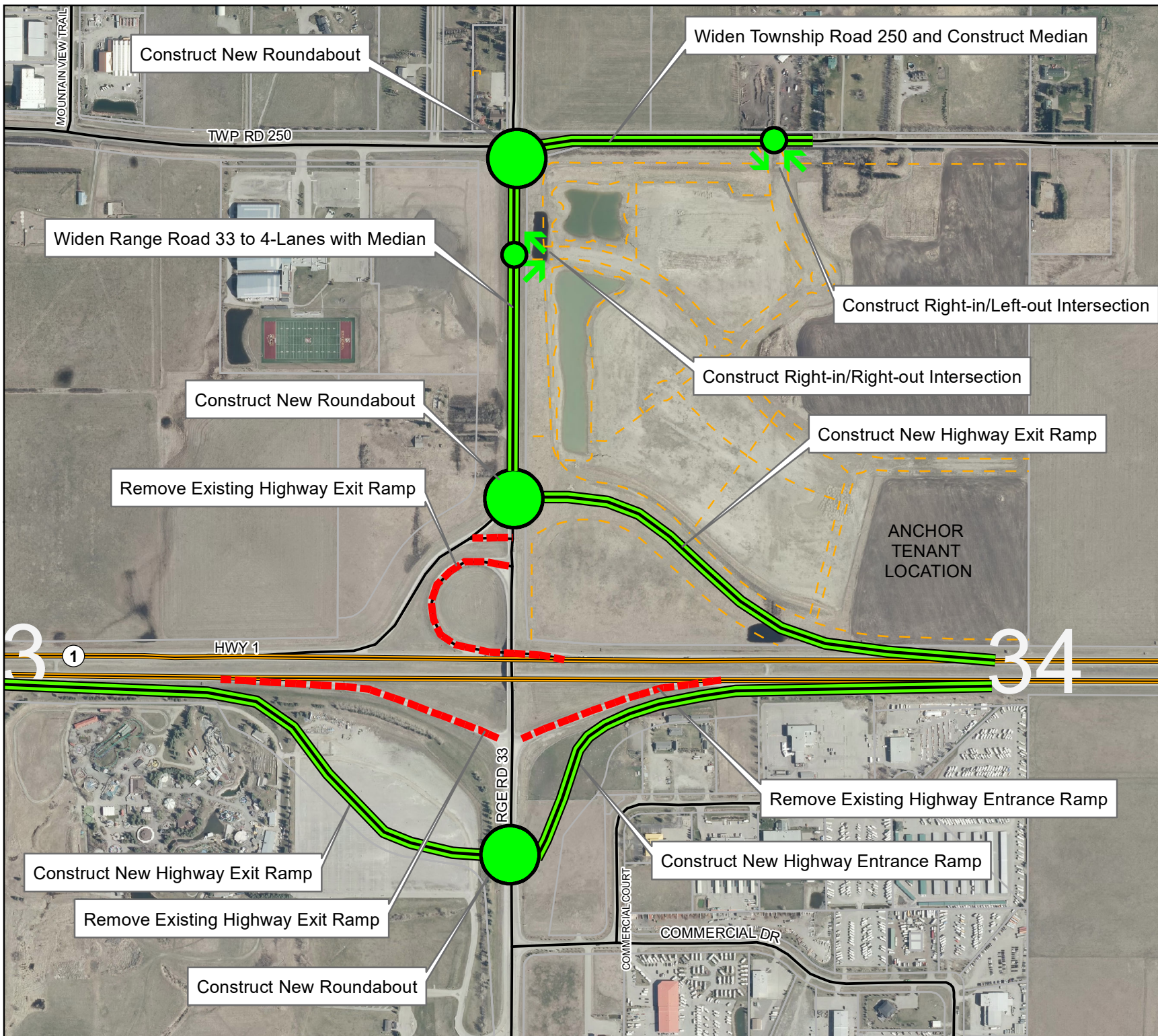
## NORTHWEST PERSPECTIVE



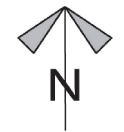
# NORTHEAST PERSPECTIVE

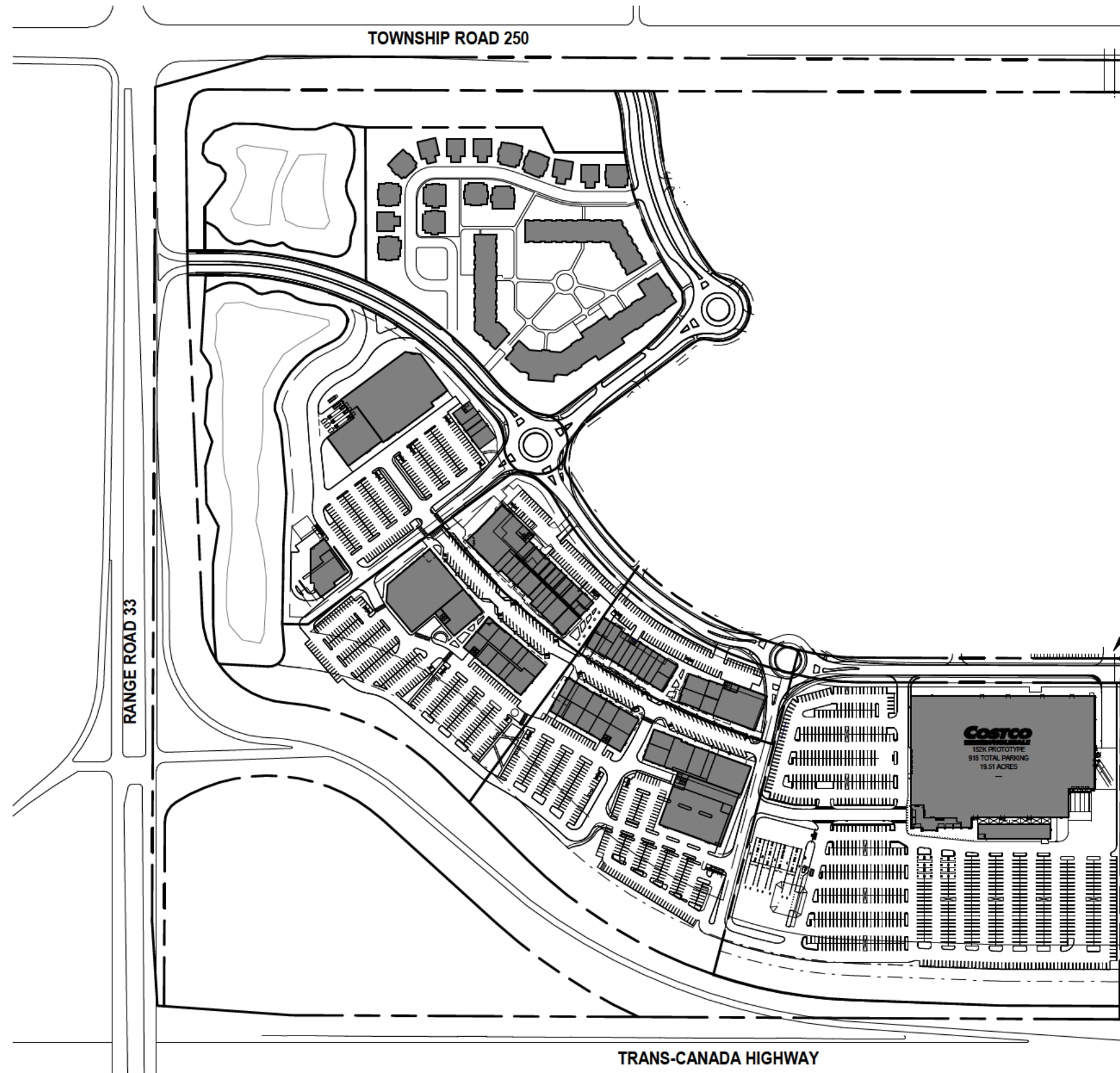


Bingham Crossing  
Proposed Road  
Network Improvements  
(First Phase)



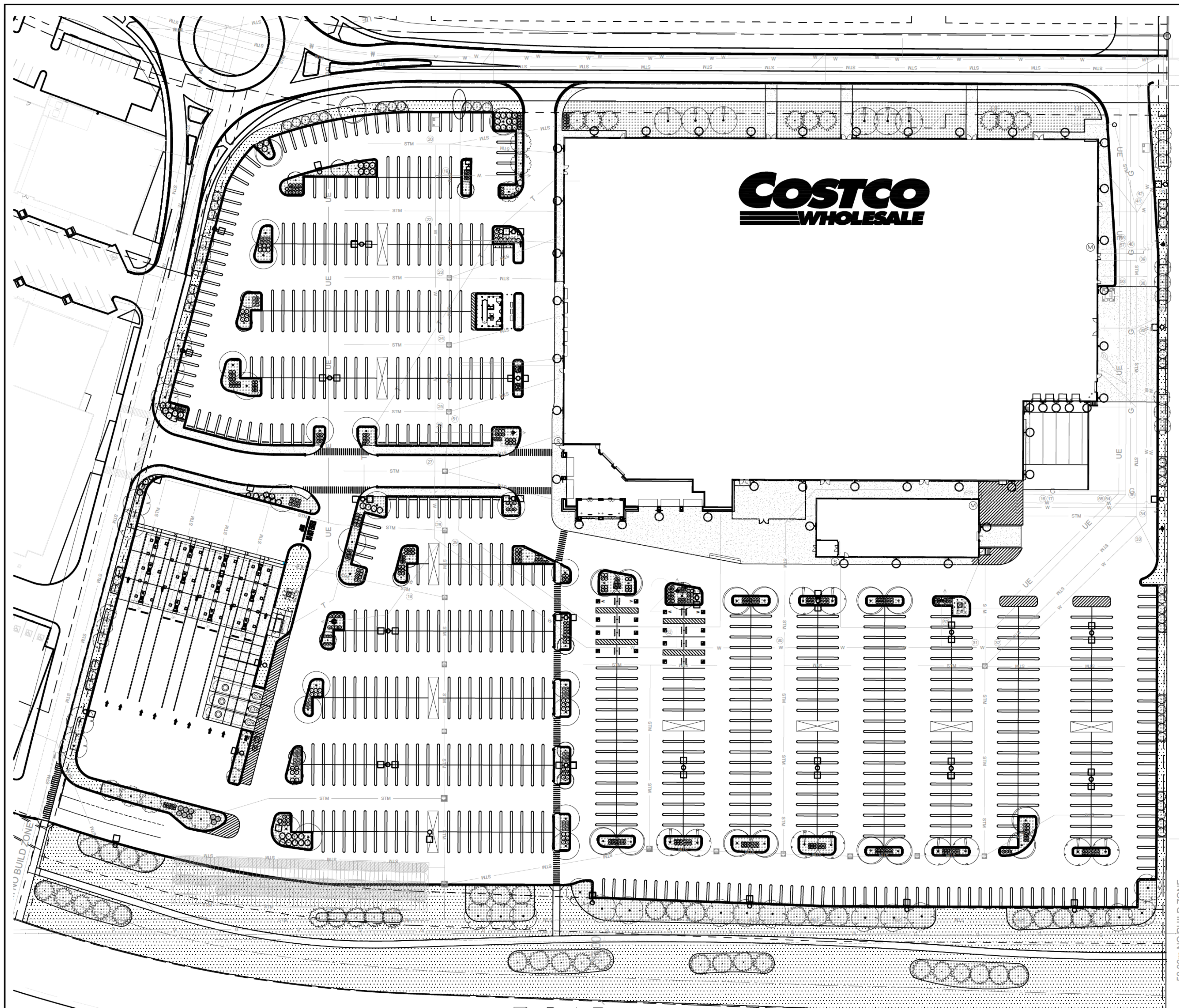
Information as depicted is subject to change, therefore Rocky View County assumes no responsibility for discrepancies after date of printing.





FUTURE CONNECTION  
 FUTURE DEVELOPMENT  
 CONVERSION OF TEMPORARY  
 EMERGENCY ACCESS TO  
 PERMANENT PROPOSED  
 PRIVATE ROAD





**1 OVERALL LANDSCAPE PLAN**  
L001 SCALE: 1:750

LANDSCAPE LEGEND	
	SOD - REFER TO NOTES, SHEET L001
	BARK MULCH - INSTALLED IN PLANTING BEDS - REFER TO PLANTING NOTES AND DETAILS, SHEET L008
TREES	
	SIBERIAN LARCH
	COLUMNAR COLORADO SPRUCE
	BLUE COLORADO SPRUCE
	PONDEROSA PINE
	OHIO BUCKEYE
	NOBILITY WHITE ASH
	PATMORE GREEN ASH
	RUSSIAN MOUNTAIN ASH
	IVORY SILK TREE LILAC
	GREENSPIRE LINDEN
	BRANDON ELM
SHRUBS / GRASSES	
	ROYAL BURGUNDY BARBERRY
	GLOBE CARAGANA
	GOLD DROP POTENTILLA
	GOLDFLAME SPIREA
	MAGIC CARPET SPIREA
	DWARF KOREAN LILAC
	DWARF EUROPEAN CRANBERRYBUSH
	KARL FOERSTER FEATHER REED GRASS
	PRINCE OF WALES JUNIPER

CIVIL LEGEND (REFERENCE ONLY)	
LEGAL	
	PROPOSED PROPERTY LINE
UTILITY	
	GAS LINE
	POWER SERVICES
	SANITARY
	STORMWATER
	WATER
	HYDRANT
	VALVE
	MANHOLE
	CATCHBASIN
	LIGHT STANDARD
	TRANSFORMERS

**GENERAL LANDSCAPE REQUIREMENTS AND CALCULATIONS**

**AREA CALCULATIONS**

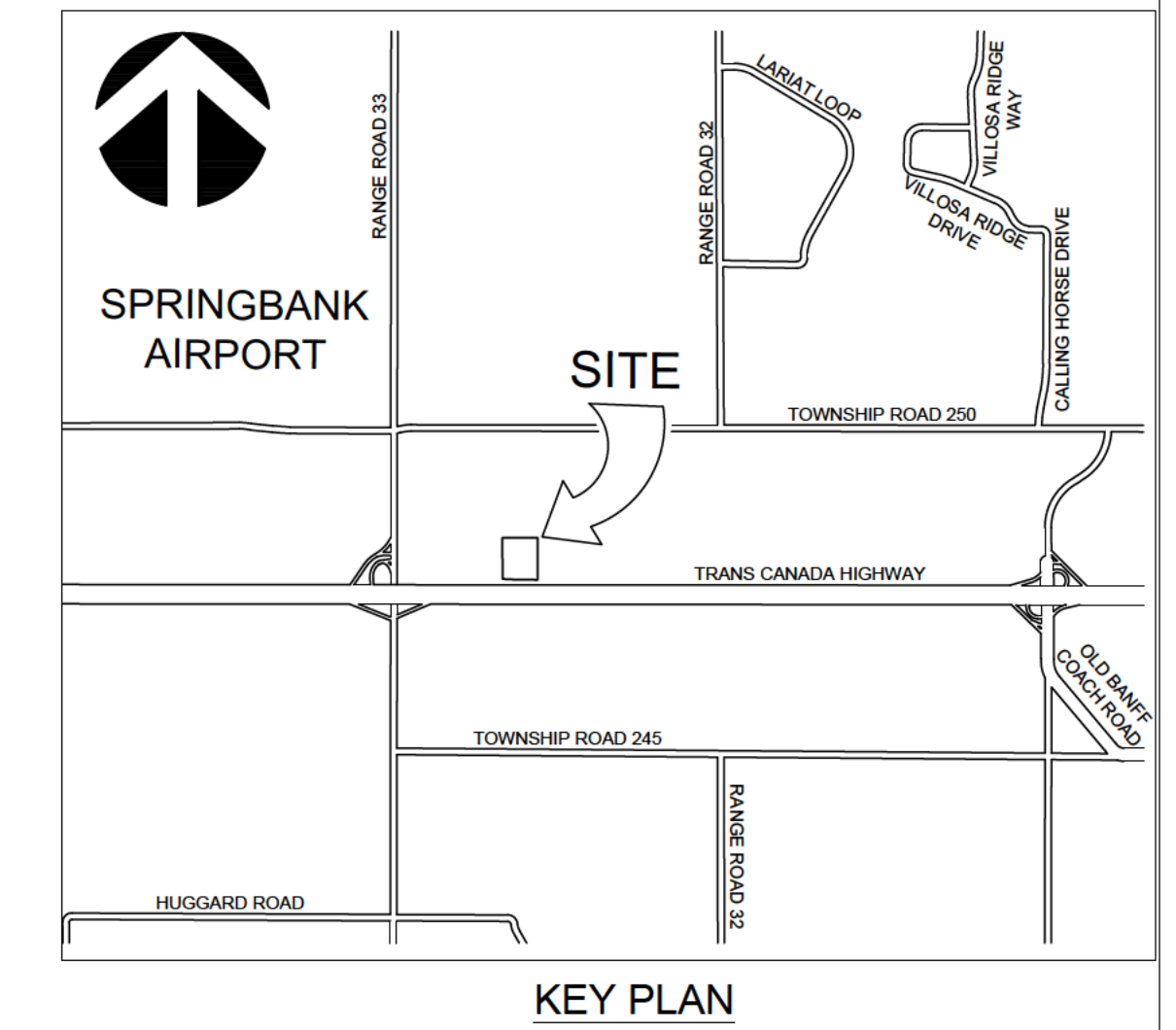
TOTAL LANDSCAPE AREA PROVIDED:	14,418 m <sup>2</sup>
TOTAL LANDSCAPE AREA REQUIRED:	7,897 m <sup>2</sup>

**TREE AND SHRUB CALCULATIONS**

TOTAL NUMBER OF TREES REQUIRED = 1 TREE / 49 m<sup>2</sup> OF TOTAL LANDSCAPED AREA:  
7,897 m<sup>2</sup> / 49 = 172 TREES REQUIRED  
PERCENTAGE OF DECIDUOUS TREES REQUIRED: 60%  
PERCENTAGE OF CONIFEROUS TREES REQUIRED: 40%

	REQUIRED	PROVIDED
DECIDUOUS TREES		
75mm Cal. MINIMUM	103	115
CONIFEROUS TREES		
3.5m Ht. MINIMUM	69	99
SHRUBS	REQUIRED	PROVIDED
#2 Potted MINIMUM	0	439

	REQUIRED	PROVIDED
DECIDUOUS TREES		
75mm Cal. MINIMUM	103	115
CONIFEROUS TREES		
3.5m Ht. MINIMUM	69	99
SHRUBS	REQUIRED	PROVIDED
#2 Potted MINIMUM	0	439



**KEY PLAN**  
SCALE: NTS

- NOTES**
- REFER TO CIVIL ENGINEERING DRAWINGS FOR GRADING INFORMATION AND LAYOUT.
  - ALL UTILITIES ARE SHOWN AS INFORMATION ONLY. CONTRACTOR TO CONFIRM LOCATION OF ALL UTILITIES PRIOR TO CONSTRUCTION.
  - CONTRACTOR TO STAKE OUT LOCATION OF ALL WORKS FOR REVIEW BY CONTRACT ADMINISTRATOR PRIOR TO ANY REMOVALS OR CONSTRUCTION.
  - CONTRACTOR SHALL CONFIRM ALL DIMENSIONS ON SITE AND REPORT ANY DISCREPANCIES TO THE CONTRACT ADMINISTRATOR PRIOR TO CONSTRUCTION.
  - DURING CONSTRUCTION CONTRACTOR TO PROTECT TO ROCKYVIEW COUNTY STANDARDS ALL EXISTING BUILDINGS, ABOVE AND BELOW GROUND UTILITIES, PAVING, CURBS, SIDEWALKS, FENCING, PLANT MATERIAL, AND BOLLARDS TO REMAIN. ANY AND ALL AREAS DAMAGED DURING CONSTRUCTION TO BE REPAIRED IN ACCORDANCE WITH ROCKYVIEW COUNTY STANDARD CONSTRUCTION SPECIFICATIONS AT NO COST TO THE ROCKYVIEW COUNTY.
  - ALL WORK TO BE DONE IN ACCORDANCE WITH ROCKYVIEW COUNTY STANDARDS UNLESS OTHERWISE NOTED.
  - ALL PLANT MATERIAL IS TO BE NURSERY GROWN STOCK AND SHALL MEET OR EXCEED THE SPECIFICATIONS OF THE CANADIAN NURSERY TRADES ASSOCIATION (CNTA) FOR SIZE, HEIGHT, SPREAD, GRADING, QUALITY, AND METHOD OF CULTIVATION.

**REVISIONS**

No.	DATE	DESCRIPTION	APPROVED BY
8			
7			
6			
5			
4			
3			
2			
1			

**ISSUED**

No.	DATE	DESCRIPTION	APPROVED BY
A	2021-06-08	ISSUED FOR GREEN NK	RM
B	2022-02-01	ISSUED FOR DEVELOPMENT PERMIT	RM
C	2022-04-01	ISSUED FOR TENDER	RM
D	2022-05-31	ISSUED FOR QA/QC	RM
E	2022-08-09	ISSUED FOR QA/QC	RM
F	2022-11-28	ISSUED FOR QA/QC	RM
G	2022-12-23	ISSUED FOR QA/QC	RM
H			

CONSULTANTS

WSP Canada Inc.  
237 4th Avenue SW, Suite 3300  
Calgary, AB, Canada T2P 4K3  
t:403.243.8380 | f:403.243.0823  
www.wsp.com

SEAL

PROJECT TITLE

**COSTCO**

**COSTCO SPRINGBANK**

SPRINGBANK, ALBERTA

SHEET TITLE

**OVERALL LANDSCAPE PLAN**

SCALE 0 5 10 15 25 35m

DRAWN BY	DESIGNED BY	PROJECT NUMBER
CV/KF	CV	211-01257-00
CHECKED BY	APPROVED BY	DATE
RM	RM	2022-12-23
DRAWING NUMBER	ISSUED	REVISION
L001	G	

Last Saved: 2023-12-23 3:16:53 PM. By: Fulmer, Kevin. Plot Style: —  
 H:\projects\2023\12\23\122311015150-Costco Springbank\Drawings\01 - Production\01 - Comments\01.dwg  
 H:\projects\2023\12\23\122311015150-Costco Springbank\Drawings\01 - Production\01 - Comments\01.dwg

LANDSCAPE LEGEND

	SOD - REFER TO NOTES, SHEET L001		BARK MULCH - INSTALLED IN PLANTING BEDS - REFER TO PLANTING NOTES AND DETAILS, SHEET L006
<b>TREES</b>		<b>SHRUBS / GRASSES</b>	
	SIBERIAN LARCH		ROYAL BURGUNDY BARBERRY
	COLUMNAR COLORADO SPRUCE		GLOBE CARAGANA
	BLUE COLORADO SPRUCE		GOLD DROP POTENTILLA
	PONDEROSA PINE		GOLDFLAME SPIREA
	OHIO BUCKEYE		MAGIC CARPET SPIREA
	NOBILITY WHITE ASH		DWARF KOREAN LILAC
	PATMORE GREEN ASH		DWARF EUROPEAN CRANBERRYBUSH
	RUSSIAN MOUNTAIN ASH		KARL FOERSTER FEATHER REED GRASS
	IVORY SILK TREE LILAC		PRINCE OF WALES JUNIPER
	GREENSPIRE LINDEN		
	BRANDON ELM		

CIVIL LEGEND (REFERENCE ONLY)

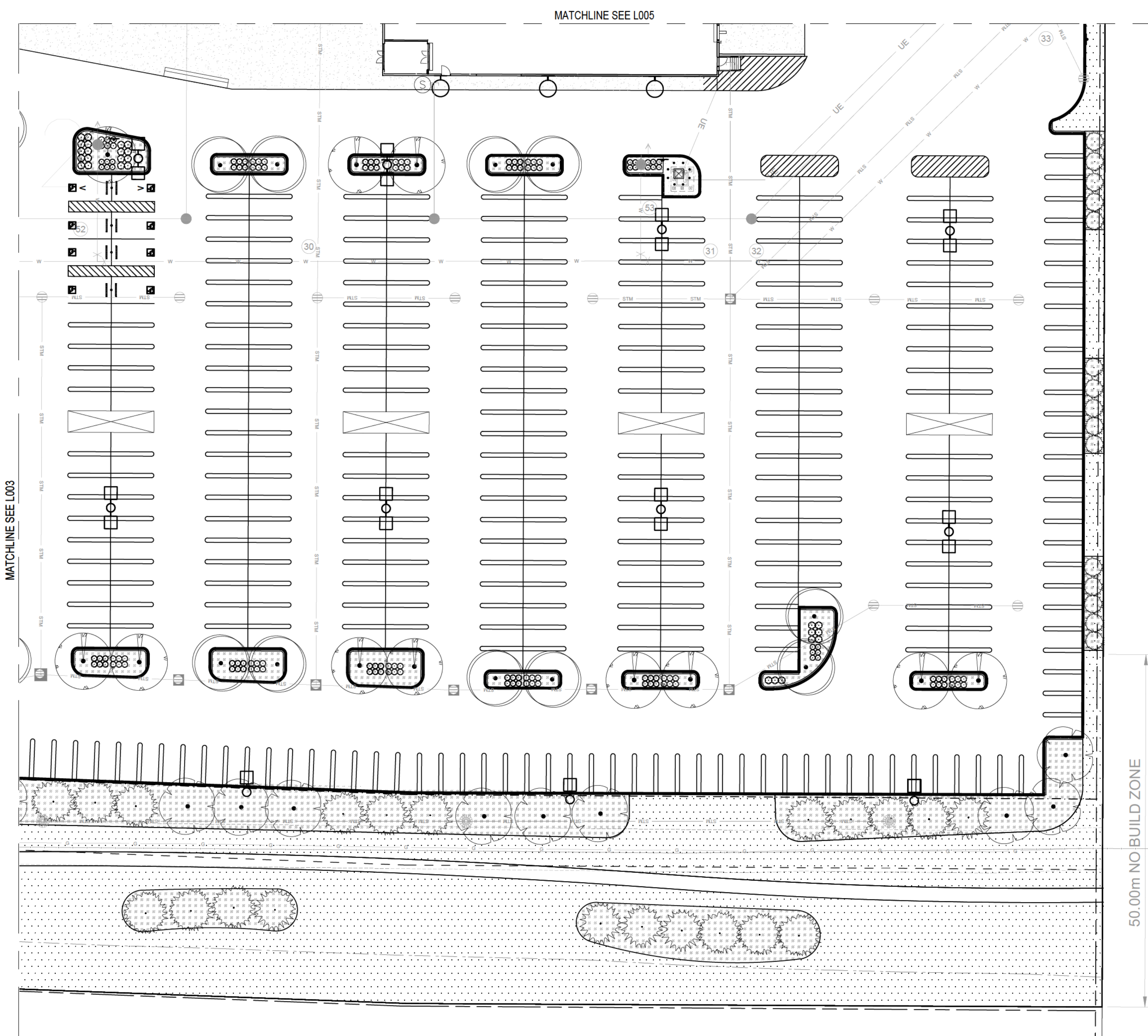
	PROPOSED PROPERTY LINE
<b>UTILITY</b>	
	GAS LINE
	POWER SERVICES
	SANITARY
	STORMWATER
	WATER
	HYDRANT
	VALVE
	MANHOLE
	CATCHBASIN
	LIGHT STANDARD
	TRANSFORMERS

NOTES

- REFER TO CIVIL ENGINEERING DRAWINGS FOR GRADING INFORMATION AND LAYOUT.
- ALL UTILITIES ARE SHOWN AS INFORMATION ONLY. CONTRACTOR TO CONFIRM LOCATION OF ALL UTILITIES PRIOR TO CONSTRUCTION.
- CONTRACTOR TO STAKE OUT LOCATION OF ALL WORKS FOR REVIEW BY CONTRACT ADMINISTRATOR PRIOR TO ANY REMOVALS OR CONSTRUCTION.
- CONTRACTOR SHALL CONFIRM ALL DIMENSIONS ON SITE AND REPORT ANY DISCREPANCIES TO THE CONTRACT ADMINISTRATOR PRIOR TO CONSTRUCTION.
- DURING CONSTRUCTION CONTRACTOR TO PROTECT TO ROCKYVIEW COUNTY STANDARDS ALL EXISTING BUILDINGS, ABOVE AND BELOW GROUND UTILITIES, PAVING, CURBS, SIDEWALKS, FENCING, PLANT MATERIAL, AND BOLLARDS TO REMAIN. ANY AND ALL AREAS DAMAGED DURING CONSTRUCTION TO BE REPAIRED IN ACCORDANCE WITH ROCKYVIEW COUNTY STANDARD CONSTRUCTION SPECIFICATIONS AT NO COST TO THE ROCKYVIEW COUNTY.
- ALL WORK TO BE DONE IN ACCORDANCE WITH ROCKYVIEW COUNTY STANDARDS UNLESS OTHERWISE NOTED.
- ALL PLANT MATERIAL IS TO BE NURSERY GROWN STOCK AND SHALL MEET OR EXCEED THE SPECIFICATIONS OF THE CANADIAN NURSERY TRADES ASSOCIATION (CNTA) FOR SIZE, HEIGHT, SPREAD, GRADING, QUALITY, AND METHOD OF CULTIVATION.

PLANT SCHEDULE AREA A

CONIFEROUS TREES	QTY	BOTANICAL NAME	COMMON NAME	CONTAINER	SIZE	MATURE SIZE (HT. X SPR.)
SLR	5	Larix sibirica	Siberian Larch	B & B	2.5m Ht.	15.0m x 6.0m
CCS	9	Picea pungens 'Fastigiata'	Columnar Colorado Spruce	B & B	2.5m Ht.	6.0m x 3.0m
CBS	15	Picea pungens 'Glauca'	Colorado Blue Spruce	B & B	2.5m Ht.	15.0m x 6.0m
DECIDUOUS TREES	QTY	BOTANICAL NAME	COMMON NAME	CONTAINER	SIZE	MATURE SIZE (HT. X SPR.)
PGA	11	Fraxinus pennsylvanica 'Patmore'	Patmore Green Ash	B & B	60mm Cal	15.0m x 8.0m
GLL	10	Tilia cordata 'Greenspire'	Greenspire Littleleaf Linden	B & B	60mm Cal	12.0m x 8.0m
ELM	10	Ulmus americana 'Brandon'	Brandon American Elm	B & B	60mm Cal	12.0 x 8.0m
DECIDUOUS SHRUBS	QTY	BOTANICAL NAME	COMMON NAME	SIZE	ROOT	MATURE SIZE (HT. X SPR.)
Rbb	18	Berberis thunbergii 'Gentry'™	Royal Burgundy Japanese Barberry	#2	Potted	0.6m x 1.0m
Gca	9	Caragana frutex 'Globosa'	Globe Caragana	#2	Potted	1.0m x 1.0m
Gfs	54	Spiraea japonica 'Goldflame'	Goldflame Japanese Spirea	#2	Potted	0.8m x 0.8m
Mcs	4	Spiraea x bumalda 'Wa buma'	Magic Carpet Spirea	#2	Potted	0.6m x 0.8m
Dec	54	Viburnum opulus 'Nanum'	Dwarf European Cranberrybush	#2	Potted	0.6m x 0.8m
GRASSES	QTY	BOTANICAL NAME	COMMON NAME	SIZE	ROOT	MATURE SIZE (HT. X SPR.)
Frg	20	Calamagrostis x acutiflora 'Karl Foerster'	Karl Foerster Feather Reed Grass	#2	Potted	1.2m x 0.8m



1 LANDSCAPE AREA A  
L002 SCALE: 1:400



REVISIONS

NO.	DATE	DESCRIPTION	APPROVED BY
8			
7			
6			
5			
4			
3			
2			
1			

ISSUED

NO.	DATE	DESCRIPTION	APPROVED BY
A	2021-06-08	ISSUED FOR GREEN NK	RM
B	2022-02-01	ISSUED FOR DEVELOPMENT PERMIT	RM
C	2022-04-01	ISSUED FOR TENDER	RM
D	2022-05-31	ISSUED FOR QA/QC	RM
E	2022-08-09	ISSUED FOR QA/QC	RM
F	2022-11-28	ISSUED FOR QA/QC	RM
G	2022-12-23	ISSUED FOR QA/QC	RM
H			

CONSULTANTS

**wsp** WSP Canada Inc.  
237 4th Avenue SW, Suite 3300  
Calgary, AB, Canada T2P 4K3  
t:403.243.8380 | f:403.243.0823  
www.wsp.com

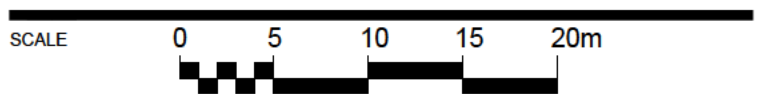
SEAL

PROJECT TITLE

**COSTCO**  
**COSTCO SPRINGBANK**  
**SPRINGBANK, ALBERTA**

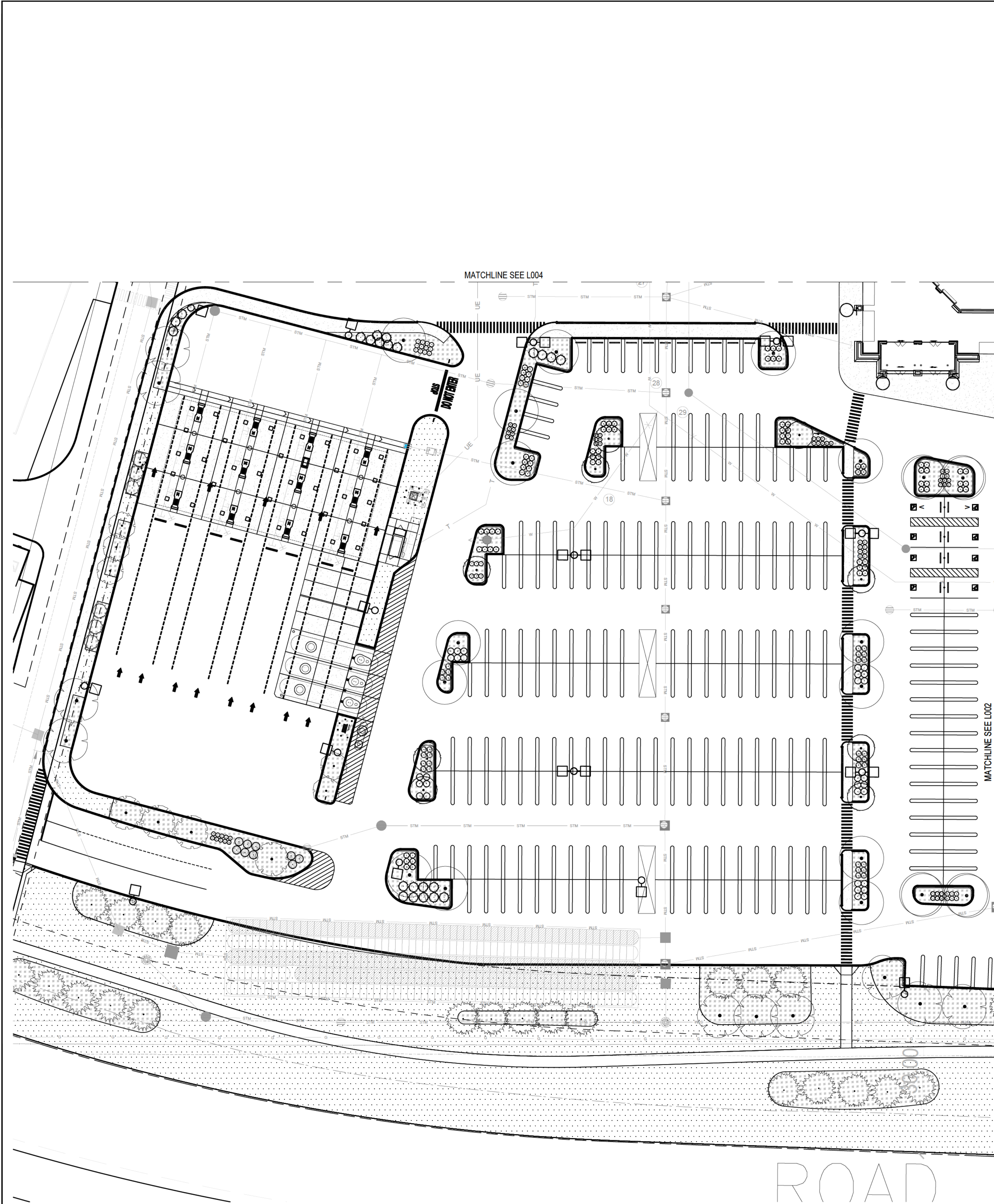
SHEET TITLE

**LANDSCAPE AREA A**



DRAWN BY	DESIGNED BY	PROJECT NUMBER
CV/KF	CV	211-01257-00
CHECKED BY	APPROVED BY	DATE
RM	RM	2022-12-23
DRAWING NUMBER	ISSUED	REVISION
L002	G	

NOTE: This design document is prepared solely for the use by the party with whom the design professional has entered into a contract and there are no representations or warranties made by the design professional to any party with whom the design professional has not entered into a contract.



### LANDSCAPE LEGEND

**SOD - REFER TO NOTES, SHEET L001**

**BARK MULCH - INSTALLED IN PLANTING BEDS - REFER TO PLANTING NOTES AND DETAILS, SHEET L006**

**TREES**

- SIBERIAN LARCH
- COLUMNAR COLORADO SPRUCE
- BLUE COLORADO SPRUCE
- PONDEROSA PINE
- OHIO BUCKEYE
- NOBILITY WHITE ASH
- PATMORE GREEN ASH
- RUSSIAN MOUNTAIN ASH
- IVORY SILK TREE LILAC
- GREENSPIRE LINDEN
- BRANDON ELM

**SHRUBS / GRASSES**

- ROYAL BURGUNDY BARBERRY
- GLOBE CARAGANA
- GOLD DROP POTENTILLA
- GOLDFLAME SPIREA
- MAGIC CARPET SPIREA
- DWARF KOREAN LILAC
- DWARF EUROPEAN CRANBERRYBUSH
- KARL FOERSTER FEATHER REED GRASS
- PRINCE OF WALES JUNIPER

### CIVIL LEGEND (REFERENCE ONLY)

**LEGAL**

- PROPOSED PROPERTY LINE

**UTILITY**

- GAS LINE
- POWER SERVICES
- SANITARY
- STORMWATER
- WATER
- HYDRANT
- VALVE
- MANHOLE
- CATCHBASIN
- LIGHT STANDARD
- TRANSFORMERS

- ### NOTES
- REFER TO CIVIL ENGINEERING DRAWINGS FOR GRADING INFORMATION AND LAYOUT.
  - ALL UTILITIES ARE SHOWN AS INFORMATION ONLY. CONTRACTOR TO CONFIRM LOCATION OF ALL UTILITIES PRIOR TO CONSTRUCTION.
  - CONTRACTOR TO STAKE OUT LOCATION OF ALL WORKS FOR REVIEW BY CONTRACT ADMINISTRATOR PRIOR TO ANY REMOVALS OR CONSTRUCTION.
  - CONTRACTOR SHALL CONFIRM ALL DIMENSIONS ON SITE AND REPORT ANY DISCREPANCIES TO THE CONTRACT ADMINISTRATOR PRIOR TO CONSTRUCTION.
  - DURING CONSTRUCTION CONTRACTOR TO PROTECT TO ROCKYVIEW COUNTY STANDARDS ALL EXISTING BUILDINGS, ABOVE AND BELOW GROUND UTILITIES, PAVING, CURBS, SIDEWALKS, FENCING, PLANT MATERIAL, AND BOLLARDS TO REMAIN. ANY AND ALL AREAS DAMAGED DURING CONSTRUCTION TO BE REPAIRED IN ACCORDANCE WITH ROCKYVIEW COUNTY STANDARD CONSTRUCTION SPECIFICATIONS AT NO COST TO THE ROCKYVIEW COUNTY.
  - ALL WORK TO BE DONE IN ACCORDANCE WITH ROCKYVIEW COUNTY STANDARDS UNLESS OTHERWISE NOTED.
  - ALL PLANT MATERIAL IS TO BE NURSERY GROWN STOCK AND SHALL MEET OR EXCEED THE SPECIFICATIONS OF THE CANADIAN NURSERY TRADES ASSOCIATION (CNTA) FOR SIZE, HEIGHT, SPREAD, GRADING, QUALITY, AND METHOD OF CULTIVATION.

### PLANT SCHEDULE AREA B

CONIFEROUS TREES	QTY	BOTANICAL NAME	COMMON NAME	CONTAINER	SIZE	MATURE SIZE (HT. X SPR.)
SLR	7	Larix s birica	Siberian Larch	B & B	2.5m Ht.	15.0m x 6.0m
CCS	6	Picea pungens 'Fastigiata'	Columnar Colorado Spruce	B & B	2.5m Ht.	6.0m x 3.0m
CBS	15	Picea pungens 'Glauca'	Colorado Blue Spruce	B & B	2.5m Ht.	15.0m x 6.0m

DECIDUOUS TREES	QTY	BOTANICAL NAME	COMMON NAME	CONTAINER	SIZE	MATURE SIZE (HT. X SPR.)
OHB	4	Aesculus glabra	Ohio Buckeye	B & B	60mm Cal	8.0m x 6.0m
NWA	14	Fraxinus americana 'Jefvis' TM	Nobility White Ash	B & B	60mm Cal	15.0m x 8.0m
RMA	5	Sorbus aucuparia 'Rossica Major'	Russian Mountain Ash	B & B	60mm Cal	6.0m x 5.0m
JTL	9	Syringa reticulata 'Ivory Si k'	Ivory Si k Japanese Tree Lilac	B & B	60mm Cal	6.0m x 5.0m
GLL	10	Tilia cordata 'Greenspire'	Greenspire Littleleaf Linden	B & B	60mm Cal	12.0m x 8.0m
ELM	4	Ulmus americana 'Brandon'	Brandon American Elm	B & B	60mm Cal	12.0 x 8.0m

CONIFEROUS SHRUBS	QTY	BOTANICAL NAME	COMMON NAME	SIZE	ROOT	MATURE SIZE (HT. X SPR.)
Pwj	23	Juniperus horizontalis 'Prince of Wales'	Prince Of Wales Juniper	#2	Potted	0.2m x 2.0 m
Dmp	30	Pinus mugo 'Pumilio'	Dwarf Mugo Pine	#2	Potted	1.2m x 1.2m

DECIDUOUS SHRUBS	QTY	BOTANICAL NAME	COMMON NAME	SIZE	ROOT	MATURE SIZE (HT. X SPR.)
Rbb	34	Berberis thunbergii 'Gentry' TM	Royal Burgundy Japanese Barberr	#2	Potted	0.6m x 1.0m
Gca	46	Caragana frutex 'Globosa'	Globe Caragana	#2	Potted	1.0m x 1.0m
Gdp	31	Potentilla fruticosa 'Gold Drop'	Gold Drop Potentilla	#2	Potted	0.6m x 1.0m
Gfs	32	Spiraea japonica 'Goldflame'	Goldflame Japanese Spirea	#2	Potted	0.8m x 0.8m
Mcs	4	Spiraea x bumalda 'Walburna'	Magic Carpet Spirea	#2	Potted	0.6m x 0.8m
Dkl	9	Syringa meyeri 'Palibin'	Dwarf Korean Lilac	#2	Potted	1.5m x 1.5m
Dec	6	Viburnum opulus 'Nanum'	Dwarf European Cranberrybush	#2	Potted	0.6m x 0.8m

GRASSES	QTY	BOTANICAL NAME	COMMON NAME	SIZE	ROOT	MATURE SIZE (HT. X SPR.)
Frg	38	Calamagrostis x acutiflora 'Karl Foerster'	Karl Foerster Feather Reed Grass	#2	Potted	1.2m x 0.8m

### REVISIONS

NO.	DATE	DESCRIPTION	APPROVED BY
8			
7			
6			
5			
4			
3			
2			
1			

### ISSUED

NO.	DATE	DESCRIPTION	APPROVED BY
A	2021-06-08	ISSUED FOR GREEN NK	RM
B	2022-02-01	ISSUED FOR DEVELOPMENT PERMIT	RM
C	2022-04-01	ISSUED FOR TENDER	RM
D	2022-05-31	ISSUED FOR QA/QC	RM
E	2022-08-09	ISSUED FOR QA/QC	RM
F	2022-11-28	ISSUED FOR QA/QC	RM
G	2022-12-23	ISSUED FOR QA/QC	RM
H			

CONSULTANTS

**wsp**

WSP Canada Inc.  
237 4th Avenue SW, Suite 3300  
Calgary, AB, Canada T2P 4K3  
t:403.243.8380 | f:403.243.0823  
www.wsp.com

SEAL

PROJECT TITLE

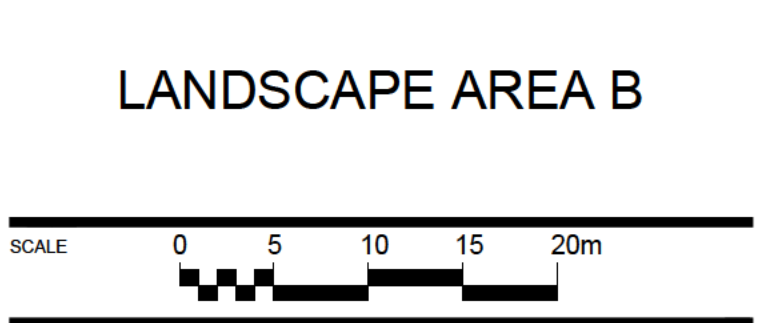
**COSTCO**

**COSTCO SPRINGBANK**

**SPRINGBANK, ALBERTA**

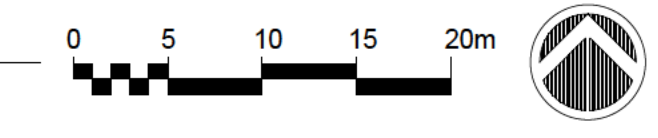
SHEET TITLE

**LANDSCAPE AREA B**



DRAWN BY	DESIGNED BY	PROJECT NUMBER
CV/KF	CV	211-01257-00
CHECKED BY	APPROVED BY	DATE
RM	RM	2022-12-23
DRAWING NUMBER	ISSUED	REVISION
<b>L003</b>	<b>G</b>	

**1 LANDSCAPE AREA B**  
**L003** SCALE: 1:400



NOTE: These design documents are prepared solely for the use by the party with whom the design professional has entered into a contract and there are no representations or warranties made by the design professional to any party with whom the design professional has not entered into a contract.



LANDSCAPE LEGEND	
	SOD - REFER TO NOTES, SHEET L001
	BARK MULCH - INSTALLED IN PLANTING BEDS - REFER TO PLANTING NOTES AND DETAILS, SHEET L006
TREES	
	SIBERIAN LARCH
	COLUMNAR COLORADO SPRUCE
	BLUE COLORADO SPRUCE
	PONDEROSA PINE
	OHIO BUCKEYE
	NOBILITY WHITE ASH
	PATMORE GREEN ASH
	RUSSIAN MOUNTAIN ASH
	IVORY SILK TREE LILAC
	GREENSPIRE LINDEN
	BRANDON ELM
SHRUBS / GRASSES	
	ROYAL BURGUNDY BARBERRY
	GLOBE CARAGANA
	GOLD DROP POTENTILLA
	GOLDFLAME SPIREA
	MAGIC CARPET SPIREA
	DWARF KOREAN LILAC
	DWARF EUROPEAN CRANBERRYBUSH
	KARL FOERSTER FEATHER REED GRASS
	PRINCE OF WALES JUNIPER

CIVIL LEGEND (REFERENCE ONLY)	
	PROPOSED PROPERTY LINE
UTILITY	
	GAS LINE
	POWER SERVICES
	SANITARY
	STORMWATER
	WATER HYDRANT
	VALVE
	MANHOLE
	CATCHBASIN
	LIGHT STANDARD
	TRANSFORMERS

- NOTES**
- REFER TO CIVIL ENGINEERING DRAWINGS FOR GRADING INFORMATION AND LAYOUT.
  - ALL UTILITIES ARE SHOWN AS INFORMATION ONLY. CONTRACTOR TO CONFIRM LOCATION OF ALL UTILITIES PRIOR TO CONSTRUCTION.
  - CONTRACTOR TO STAKE OUT LOCATION OF ALL WORKS FOR REVIEW BY CONTRACT ADMINISTRATOR PRIOR TO ANY REMOVALS OR CONSTRUCTION.
  - CONTRACTOR SHALL CONFIRM ALL DIMENSIONS ON SITE AND REPORT ANY DISCREPANCIES TO THE CONTRACT ADMINISTRATOR PRIOR TO CONSTRUCTION.
  - DURING CONSTRUCTION CONTRACTOR TO PROTECT TO ROCKYVIEW COUNTY STANDARDS ALL EXISTING BUILDINGS, ABOVE AND BELOW GROUND UTILITIES, PAVING, CURBS, SIDEWALKS, FENCING, PLANT MATERIAL, AND BOLLARDS TO REMAIN. ANY AND ALL AREAS DAMAGED DURING CONSTRUCTION TO BE REPAIRED IN ACCORDANCE WITH ROCKYVIEW COUNTY STANDARD CONSTRUCTION SPECIFICATIONS AT NO COST TO THE ROCKYVIEW COUNTY.
  - ALL WORK TO BE DONE IN ACCORDANCE WITH ROCKYVIEW COUNTY STANDARDS UNLESS OTHERWISE NOTED.
  - ALL PLANT MATERIAL IS TO BE NURSERY GROWN STOCK AND SHALL MEET OR EXCEED THE SPECIFICATIONS OF THE CANADIAN NURSERY TRADES ASSOCIATION (CNTA) FOR SIZE, HEIGHT, SPREAD, GRADING, QUALITY, AND METHOD OF CULTIVATION.

PLANT SCHEDULE AREA D						
CONIFEROUS TREES	QTY	BOTANICAL NAME	COMMON NAME	CONTAINER	SIZE	MATURE SIZE (HT. X SPR.)
SLR	9	Larix sibirica	Siberian Larch	B & B	2.5m Ht.	15.0m x 6.0m
CCS	9	Picea pungens 'Fastigiata'	Columnar Colorado Spruce	B & B	2.5m Ht.	6.0m x 3.0m
DECIDUOUS TREES	QTY	BOTANICAL NAME	COMMON NAME	CONTAINER	SIZE	MATURE SIZE (HT. X SPR.)
PGA	6	Fraxinus pennsylvanica 'Patmore'	Patmore Green Ash	B & B	60mm Cal	15.0m x 8.0m
RMA	9	Sorbus aucuparia 'Rossica Major'	Russian Mountain Ash	B & B	60mm Cal	6.0m x 5.0m
DECIDUOUS SHRUBS	QTY	BOTANICAL NAME	COMMON NAME	SIZE	ROOT	MATURE SIZE (HT. X SPR.)
Gfs	12	Spiraea japonica 'Goldflame'	Goldflame Japanese Spirea	#2	Potted	0.8m x 0.8m

REVISIONS			
No.	DATE	DESCRIPTION	APPROVED BY
8			
7			
6			
5			
4			
3			
2			
1			

ISSUED			
No.	DATE	DESCRIPTION	APPROVED BY
A	2021-06-08	ISSUED FOR GREEN NK	RM
B	2022-02-01	ISSUED FOR DEVELOPMENT PERMIT	RM
C	2022-04-01	ISSUED FOR TENDER	RM
D	2022-05-31	ISSUED FOR QA/QC	RM
E	2022-08-09	ISSUED FOR QA/QC	RM
F	2022-11-28	ISSUED FOR QA/QC	RM
G	2022-12-23	ISSUED FOR QA/QC	RM
H			

CONSULTANTS

**wsp** WSP Canada Inc.  
237 4th Avenue SW, Suite 3300  
Calgary, AB, Canada T2P 4K3  
t:403.243.8380 | f:403.243.0823  
www.wsp.com

SEAL

PROJECT TITLE

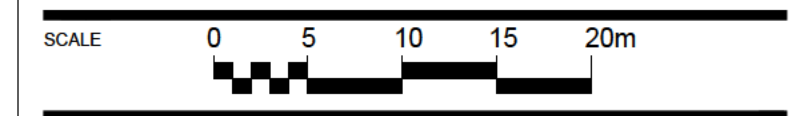
**COSTCO**

**COSTCO SPRINGBANK**

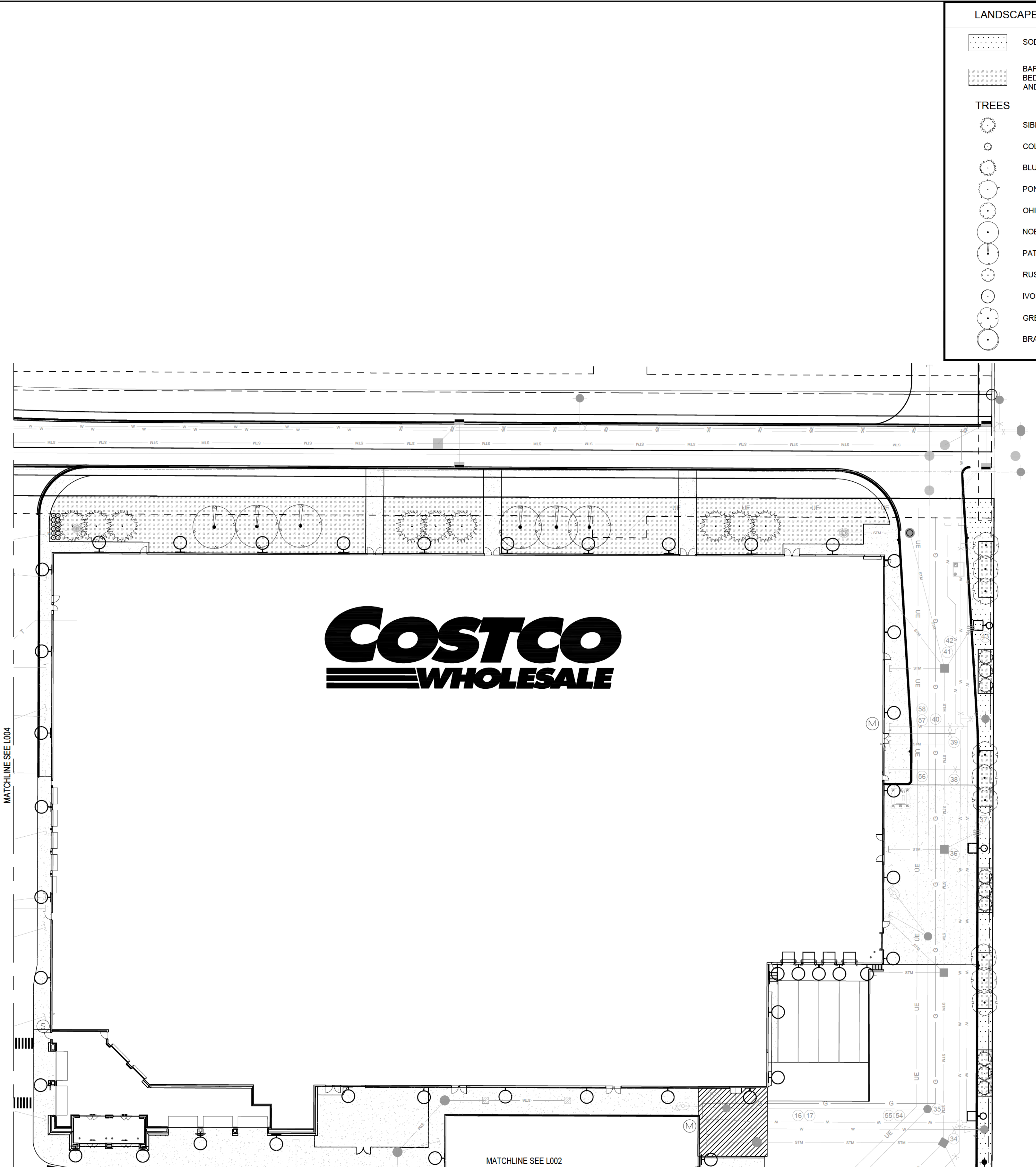
**SPRINGBANK, ALBERTA**

SHEET TITLE

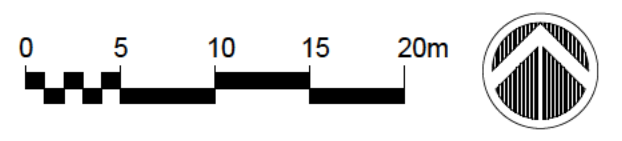
**LANDSCAPE AREA D**



DRAWN BY	DESIGNED BY	PROJECT NUMBER
CV/KF	CV	211-01257-00
CHECKED BY	APPROVED BY	DATE
RM	RM	2022-12-23
DRAWING NUMBER	ISSUED	REVISION
<b>L005</b>	<b>G</b>	



**1 LANDSCAPE AREA D**  
L005 SCALE: 1:400



NOTE: These design documents are prepared solely for the use by the party with whom the design professional has entered into a contract and there are no representations or warranties made by the design professional to any party with whom the design professional has not entered into a contract.